

Finnrick Analytics
Finnrick.com
Austin, TX




Project 135282
Lab # 128490
Date Rec'd 9/12/2025
Report Issued 9/18/2025

Project
Sample Retatrutide 10 mg XY6YXVM

Certificate of Analysis

Analyte	Result	LOQ	Units	Method	Date	% of Label
Peptide Analysis						
Chromatographic purity	99.92	0.5	%	HPLC-UV/MS	9/15/2025	
Total peptide mass	7.52	0.5	mg	HPLC-UV/MS	9/15/2025	75.180000
Mass spectral identification	Confirmed			HPLC-UV/MS	9/15/2025	

The data presented are from the analysis of the sample shown and meet Krause Analytical internal quality assurance criteria unless otherwise flagged.
Methods shown reference current Krause Analytical SOPs
ND - Not detected LOQ - limit of quantification
Copyright © 2025 Krause Analytical LLC. All rights reserved.

Respectfully submitted,

Mark C. Krause
Laboratory Director

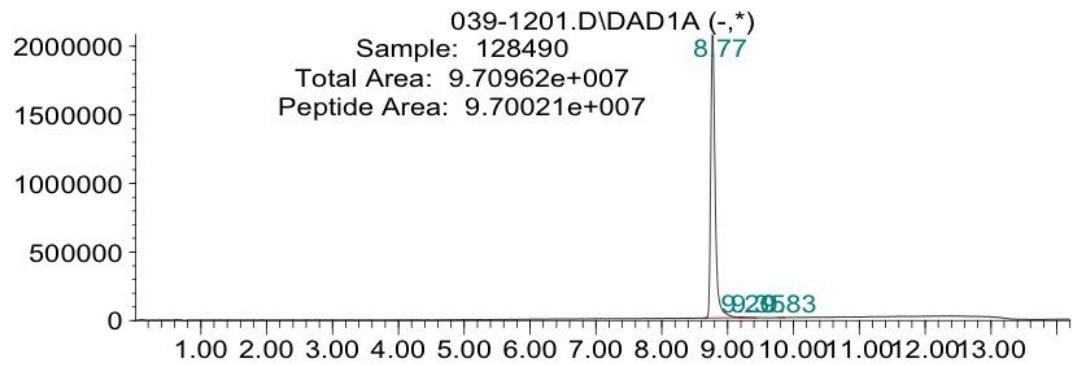
8127 Mesa Drive Suite B-206 Austin, TX 78759



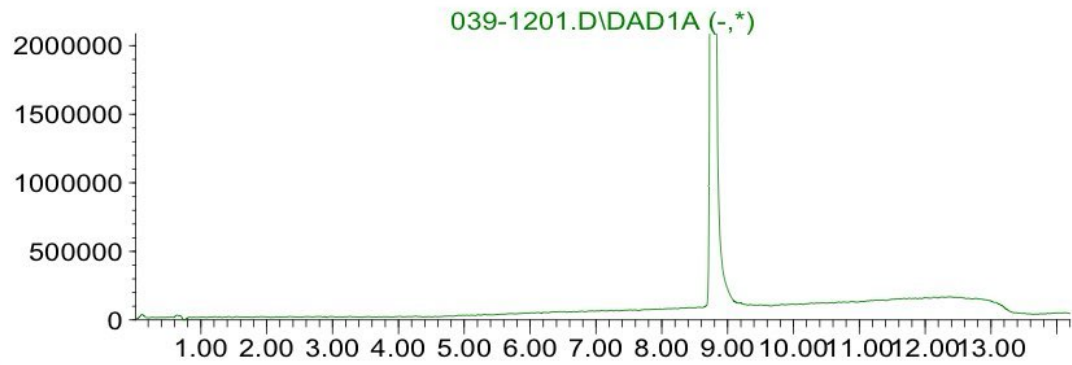
Lab #: 128490 Retatrutide 10 mg XY6YXVM

Chromatogram

Response_



Time
Response_

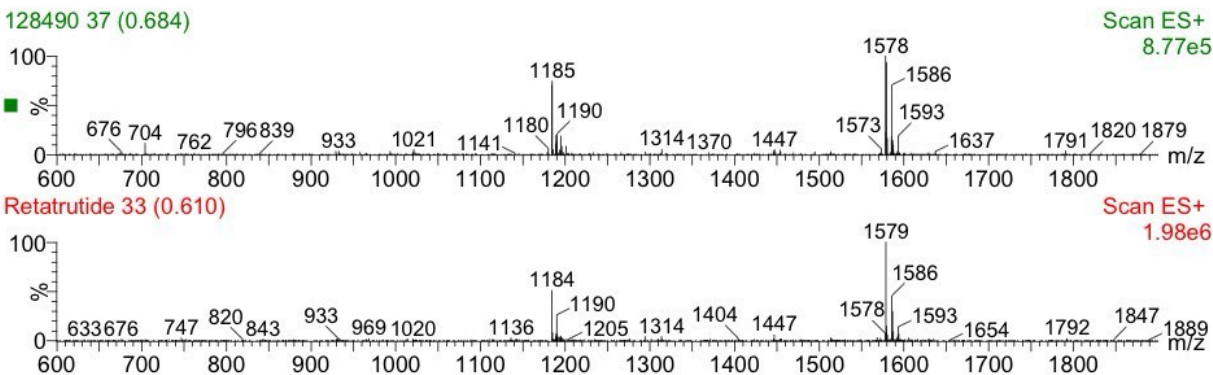


Time

Krause Analytical, LLC 8127 Mesa Drive Suite B-206 Austin, TX 78759



Mass spectrum/Reference Spectrum



Method Summary

- 2 mL of purified water is added to the lyophilized powder in the vial, and the contents mixed to dissolve the lyophilized powder.
- An aliquot is taken from the vial and diluted to contain approximately 500 mg/L of the peptide.
- The diluted sample is analyzed by HPLC-UV-MS.
- The mass spectrum obtained is compared to an authentic standard of the peptide for identification.
- The total area of all of the peaks in the chromatogram is calculated, and the area of the peak of the peptide is divided by the total area to obtain the chromatographic purity value, reported in percent.
- The area of the peptide is compared to the area of the peptide peak in the known standard to obtain a concentration in the solution. This concentration is used to calculate the total mass of peptide in the vial, which is compared to the stated mass (label claim) and reported as both total mass in the vial and as a percent of the label claim.

Krause Analytical, LLC 8127 Mesa Drive Suite B-206 Austin, TX 78759

Testing Certificate Authentication



FINNRICK TEST CERTIFICATE ID

xy6yxvm

PRODUCT

Retatrutide 10mg from **Pure Tested Peptides**

BATCH ID

20250710V

TESTED BY

Krause Analytical on 18 Sept 2025

VERIFICATION URL

<https://www.finnrick.com/testing-certificate/retatrutide/pure-tested-peptides/20250918-e-xy6yxvm>

All certificates published on the Finnrick web site were commissioned and paid for by Finnrick. Certificate contents © Finnrick Analytics LLC and its suppliers.

Just To Be Clear

This web site is provided for educational and informational purposes only and does not constitute medical advice or professional services. The information provided is not intended to diagnose, treat, cure, or prevent a health problem or disease, and those seeking